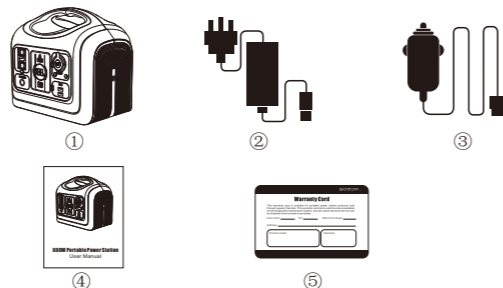


600W Protbale Power Station User Manual

1. Packed Items

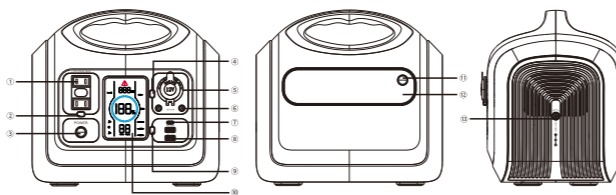
Before opening the package, please check whether the package is damaged or not, after opening the package, please check whether the product appearance is damaged or lack of accessories.

| No. | Item | Quantity |
|-----|---|----------|
| 1 | Portable Power Station | 1 |
| 2 | AC adaptor (including AC charging cable) | 1 |
| 3 | cigarette lighter cable(cigarette port to DC7909 connector male) | 1 |
| 4 | User manual | 1 |
| 5 | Warranty card | 1 |



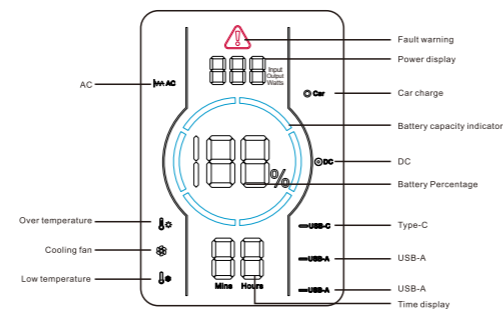
Note: picture is only for reference, pls take the product as the standard.

2.Function Introduction



- | | | |
|---------------------------------|-------------------------|------------------|
| 1.AC output port | 7.Type-C PD output port | 13.Charging port |
| 2.AC outpu tbutton | 8.USB-A output port | |
| 3.Main power button | 9.Type-C&USB-A button | |
| 4.Car charge&DC charge button | 10.LCD screen | |
| 5.DC12V car ignitor output port | 11.LED lamp button | |
| 6.DC 12V 5521 output port | 12.LED lamp | |

LCD Screen



LCD Battery Display

The LCD blue circular battery circle and the percentage of battery display indicate the battery.The blue power circle is divided into six segments. During use, the segment will disappear from the screen, and the percentage of the corresponding power will be displayed, indicating the remaining battery capacity.When charging, the blue battery circle will flash in turn, showing a flowing state.After fully charged, all blue battery segments will be lit and the display of battery's percentage will show 100%, and remain stable.

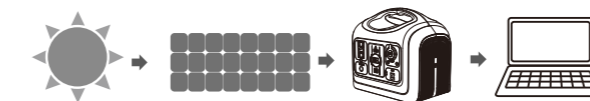
Note: If the product fails, a red exclamation mark will be displayed on the screen.

3.Charging Instructions

Note: Please charge the product to 100% before using. When charging the product, the battery capacity display icon on LCD screen will be on dynamic status, after the battery is charged fully, the display icon will on static status

How to charge this product?

•Solar Panel charge the product



- (1)Chose suitable solar panel (DC14~40V/120W)
- (2)Put the solar panel under strong sunshine, face to the sun positively.
- (3)Take the part MC4 cable, connect the solar panel and the product.
- (4)When the product is charged fully by the Solar, it will stop charging automatically.

Note:Please take out the charging cable, and turn off the product.

•AC charger charge the product

Note: Always use the standard AC charger that comes with the product.



- (1) Connect the product and socket with the AC charger in the package.
- (2) please unplug the charger when charging completed.(it takes about 6-7hrs to fully recharge the product if using 90W AC adapter charger.)

Note: It is normal for this product to get hot during charging.

•Car charger charge the product



- (1) Connect the product and the cigarette lighter socket with the cigarette lighter cable inpackage.
- (2) Charge the product after starting the car.

Note: Make sure that the wiring is in good contact; otherwise the contact terminals may melt or ignite at high temperatures.

•USB-C charger charge the product



- (1) Connect the USB-C port and USB-C charger on the product, and the USB-C port adaptive detection equipment on the product starts charging

4.Discharge instructions

•Buttons operation

(1)Main power button

Turn on the power: press and hold the main power button for 2 seconds, the LED lights around the button will light up in a breathing flashing state, and the LCD screen will light up to display a blue battery circle and battery percentage;

Turn off the power: long press the main power button for 2 seconds, the breathing light and LCD screen will go out at the same time.

(2)**Car charge & DC on and off:** When the main power button is on, press the button at the top right of the panel, and the corresponding display screen will light up **Car** and **DC** icon, the area function can be used normally at this time; press this button again, the **Car** and **DC** on screen which corresponding display will go out, and the area function stops working at this time.

(3)**USB button on and off :** When the main power button is turned on, lightly press the lower right button on the panel, and the corresponding display screen will light up **USB-A** icons at the same time. At this time, the area function can be used normally;Press this button again, all **USB-A** icons on the corresponding display screen will go out, and the area function will stop working at this time.

(4)**Type-Cbutton on and off :** Adaptive, plug and play, bidirectional charging.

(5)**AC button on and off:**When the main power button is turned on, tap the button at the top right of the panel, and the corresponding display screen will light up the **AC** icon at the same time. At this time, the area functions can be used normally;Tap this button again, and the icon **AC** on the corresponding display screen goes out, and the area function stops working at this time.

(6) **LED light button turn on and turn off:**The LED light is not controlled by the main switch. Press the button on the other side of the product to slight light, press again to switch to highlight, press again to switch to SOS mode, and press once again to turn off the LED light.

•Connectible devices

USB output port: smartphone, MP3 player, digital camera, electronic reader, tablet Computer, etc.

Type-C PD output port: smart phones, tablets, etc.

DC 12V 5521 output port: mainly used for LED light bulb lighting.

DC12V Cigarette Lighter output port: Vehicle Refrigerator and Other 12V equipment.

AC output port: notebook computer, camera, display devices and other AC power supply working equipment.

•Estimation of backup time

| | | |
|---|---|--|
| 25Wsmartphone 2 hours 10Watt load | 20W LED lamp 25 hours 20Watt load | 75W LCD TV 6.6 hours 75Watt load |
|---|---|--|

| | | |
|---|--|---|
| 25W electric tool 6 hours 80Watt load | 90W refrigerator 5.5 hours 90Watt load | 200W electric stewing pot 2.5 hours 200Watt load |
|---|--|---|

5.Storage and maintenance

1. Full charge the machine before storage.
2. Switch off all power buttons.
3. If there is any dirt, soak and wring out the cloth to wipe it clean.
4. Please do not use gasoline, volatile oil, thinner, kerosene, etc. which have the function of dissolving the resin.
5. Keep it in dry and less dusty place. Temperature within 0- 40℃, avoid direct sunlight.
6. Please full charge the product at least once every six months.

6.Technical specification

| Output | | |
|--------------------------------------|--|------------|
| AC output | Rated voltage | 100-120Vac |
| | Rated power | 600W |
| | Peak power | 900W |
| | Frequency | 50/60Hz |
| | Rated voltage | 12V |
| DC 12V output (cigarette lighter) | Rated current | 10A |
| | Rated voltage | 12V |
| USB output | 5V/3A; 9V/2A; 12V/1.5A (18W Max) | |
| Type-C output | 5V/3A; 9V/3A; 12V/3A; 15V/3A; 20V/3A | |
| LED lighting | LED works independently, press the switch button of LED light, the working status sequence of LED light is: half brightness-full brightness-SOS-off. | |
| Input | | |
| Input voltage | 12V~30V | |
| 7909 Input power | 100W MAX | |
| USB-C Input power | 60W MAX | |
| Battery | | |
| Rated capacity | 595wh | |
| Rated voltage | 19.2Vdc | |
| Battery cell type | LiFePO ₄ | |
| General | | |
| Protection level | IP21 | |
| Working environment condition | Relative humidity:10%-90% | |
| Size | 267*197*247mm | |
| Net weight | 6.8kg | |

7.Trouble shooting

If the product cannot charge or power other devices, please check according to following steps:

1. Make sure the power button is turned on.
 2. Make sure the AC and Dc power buttons are on, viz. the LED screen on the right of the button is on.
 3. Check the battery capacity, if it's lower than 10%, please recharge the product as soon as possible.
 4. Make sure the load power connected didn't exceed the limit power of this product each port has a limit for the power connected.
- If you can't clear the trouble after above steps, please contact our after sale service center.

8.Storage and maintenance

Please keep the power of the equipment to 40%~60% and store it in a dry and cool place. Charge to 80% every six months, the service life of that battery core can be prolon.